



VON DER FORSCHUNG AUF DIE BAUSTELLE: DER HILTI USE CASE

Michele Crabolu, Akis Mekikis
HILTI

Tommaso Bendinelli
CSEM

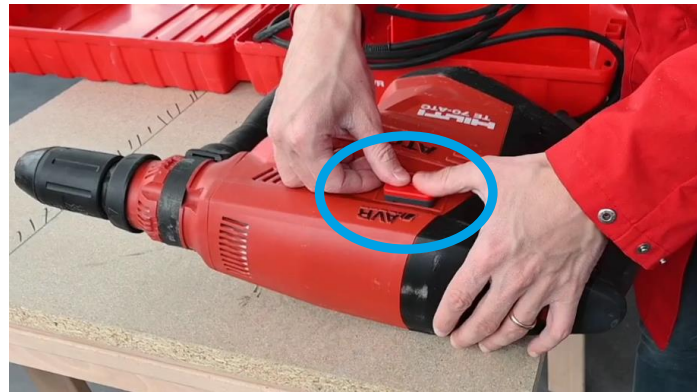
Digital Liechtenstein, 26.09.2024

WE DEVELOPED A NEW ML SOLUTION FOR RECOGNIZING TOOL ACTIVITIES FROM VIBRATION DATA

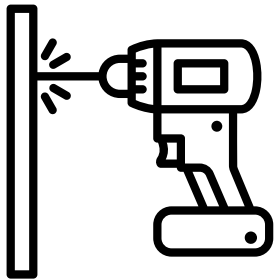
ETH zürich

HILTI

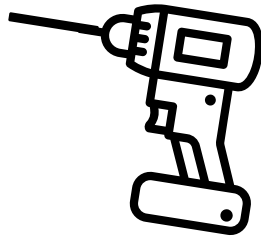
csem



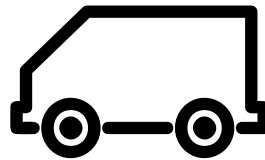
Activity such as



Drilling



Tool off



Transportation

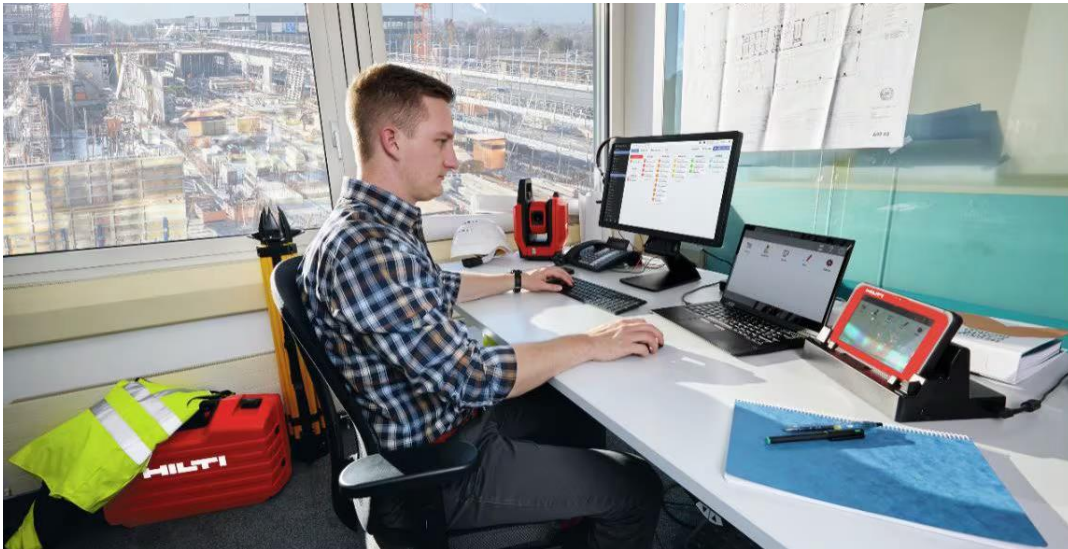
For any tool or brand:



BUILDING CONSTRUCTION MONITORING IS CHALLENGING

Questions:

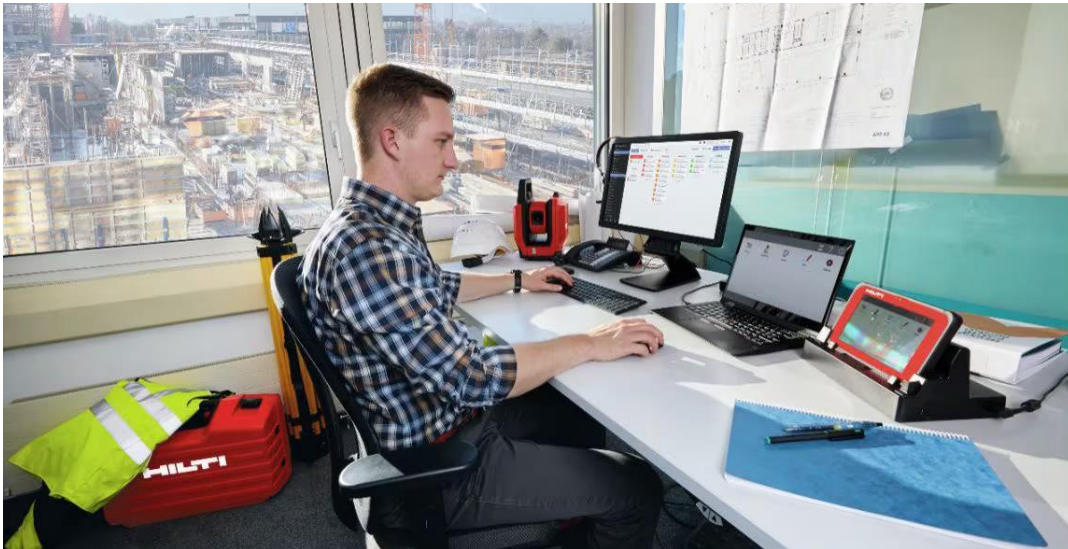
- Is the construction going according to plan?
- What materials/tools are needed?



BUILDING CONSTRUCTION MONITORING IS CHALLENGING

Questions:

- Is the construction going according to plan?
- What materials/tools are needed?

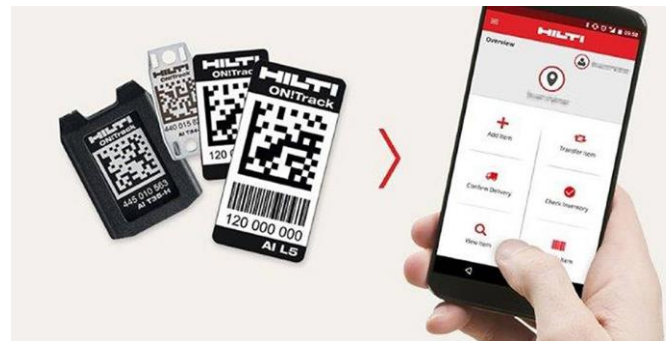


HILTI'S ON!TRACK IS THE FIRST CRUCIAL STEP FOR INVENTORY AND ASSET MANAGEMENT

- Find equipment and assets
- Track consumables
- It alerts you when:
 - tools need maintenance
 - tools need calibration
 - it is time to renew training or certification
- An important assistant towards building construction monitoring




ON!TRACK




TOOL UTILISATION

Week 10 of 2024




 0 hours



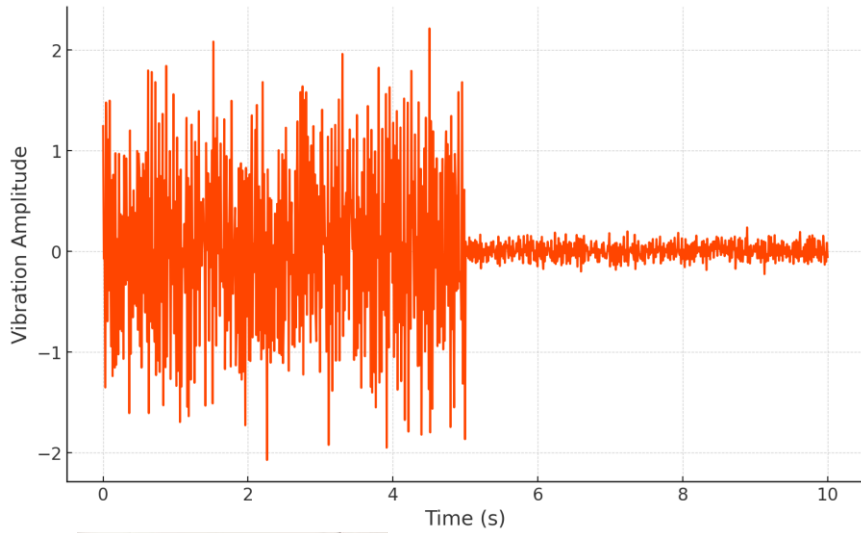
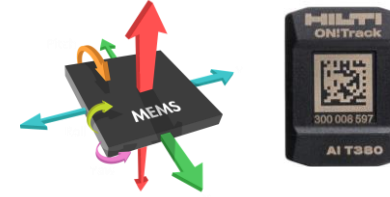
 5 hours



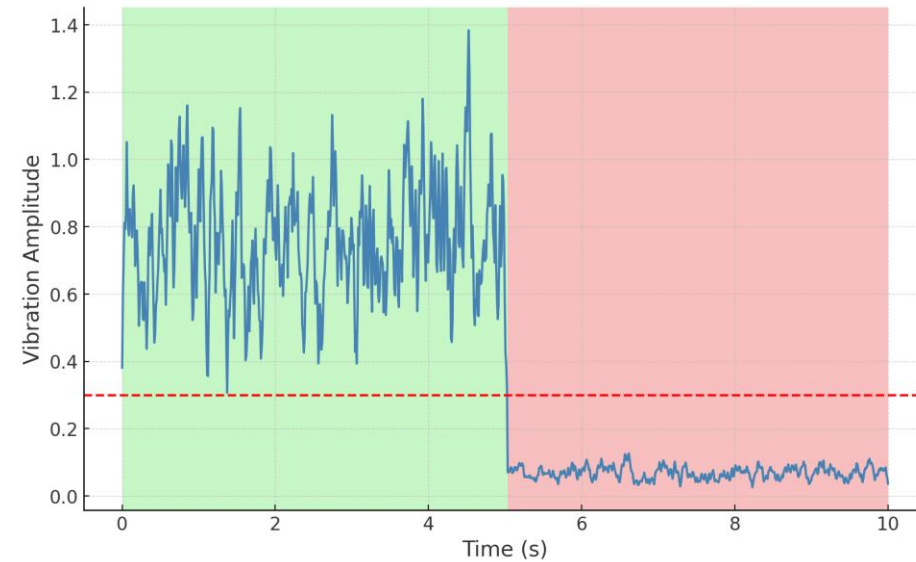
 3 hours

TOOL UTILIZATION CAN BE INFERRED FROM VIBRATIONS

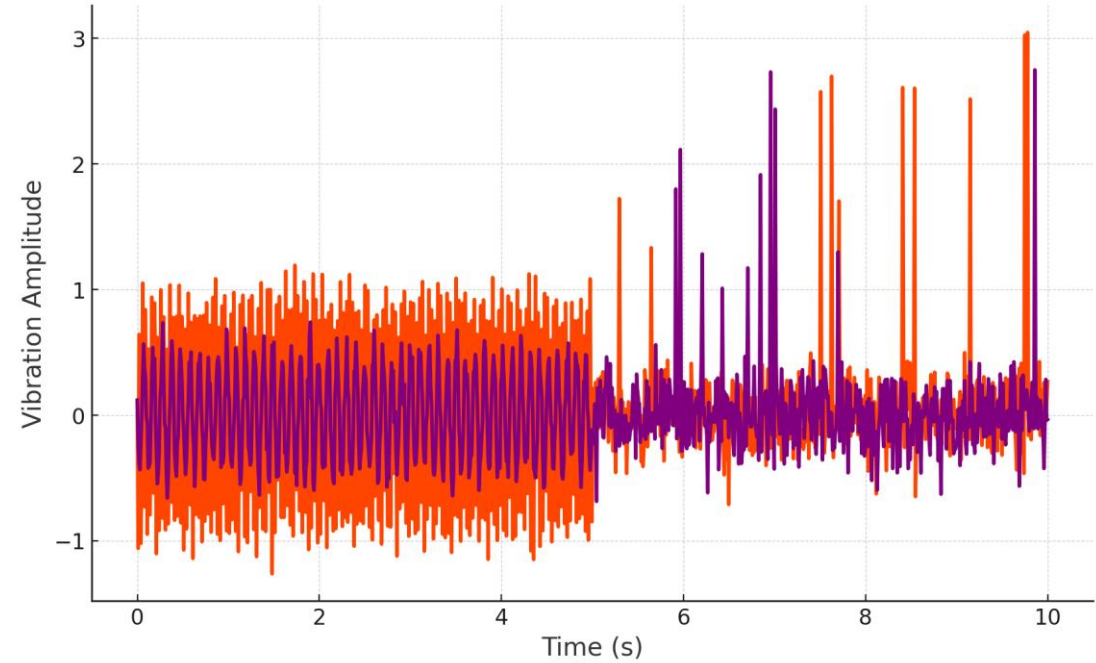
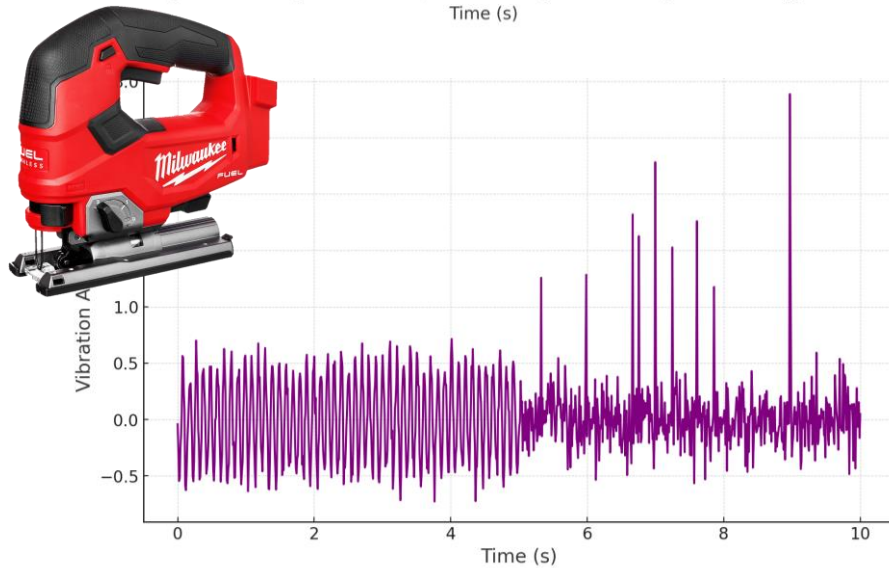
Could we just apply a standard signal processing + threshold?



Signal Processing
+
Threshold



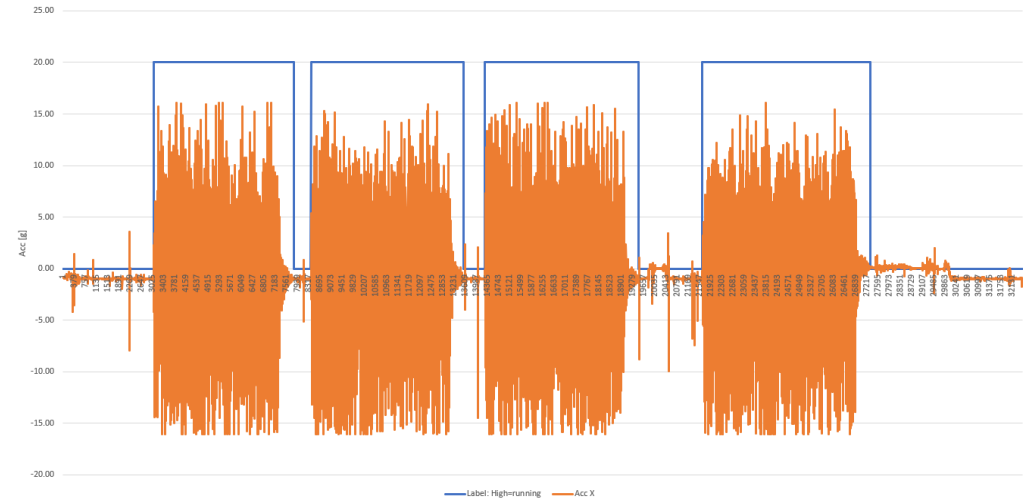
DIFFERENT TOOLS DIFFERENT FREQUENCIES



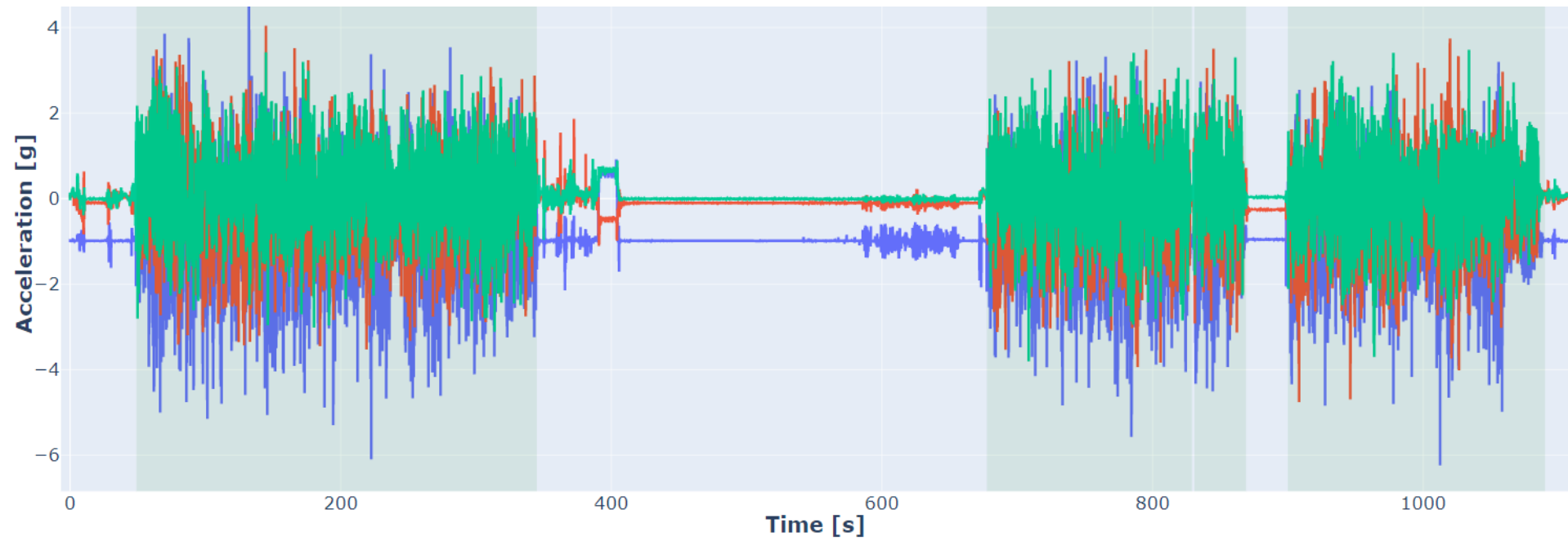


WHAT DID WE DO?

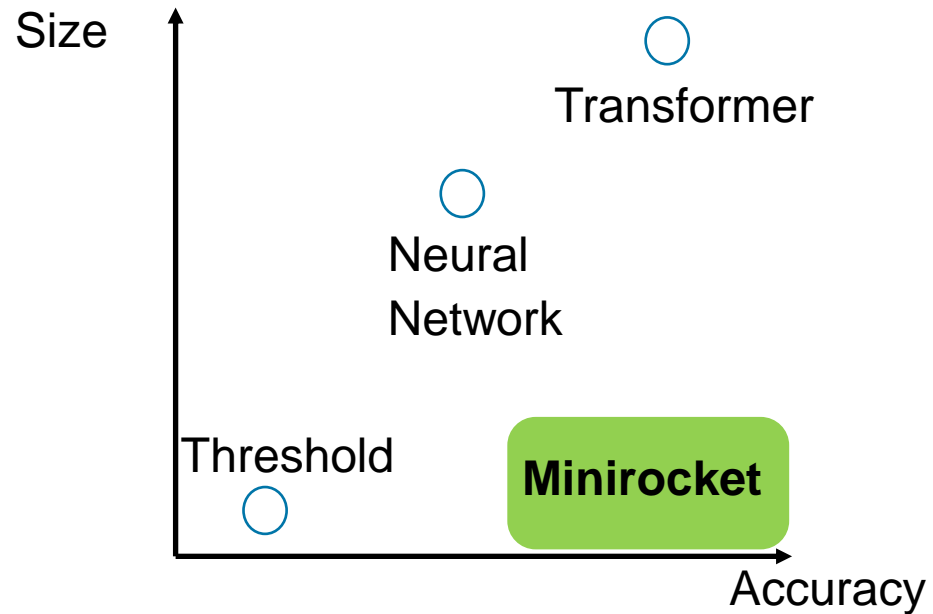
RIGOROUS DATA COLLECTION BY HILTI



DASHBOARD FOR DATA ANALYSIS



ALGORITHM SELECTION:



MINIROCKET

A Very Fast (Almost) Deterministic Transform for Time Series Classification

Angus Dempster
angus.dempster1@monash.edu
Monash University
Melbourne, Australia

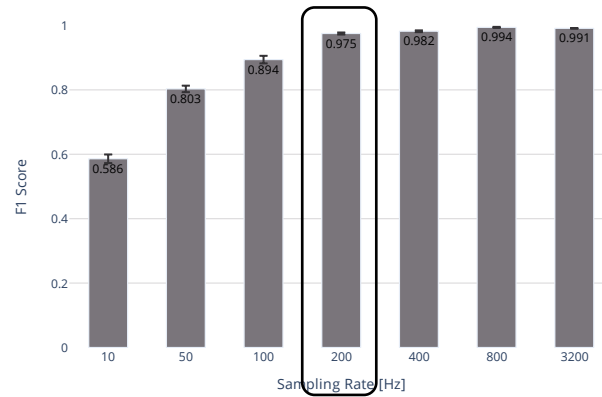
Daniel F. Schmidt
daniel.schmidt@monash.edu
Monash University
Melbourne, Australia

Geoffrey I. Webb
geoff.webb@monash.edu
Monash University
Melbourne, Australia

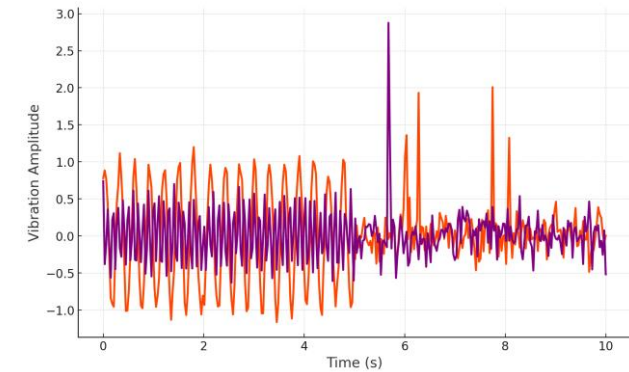
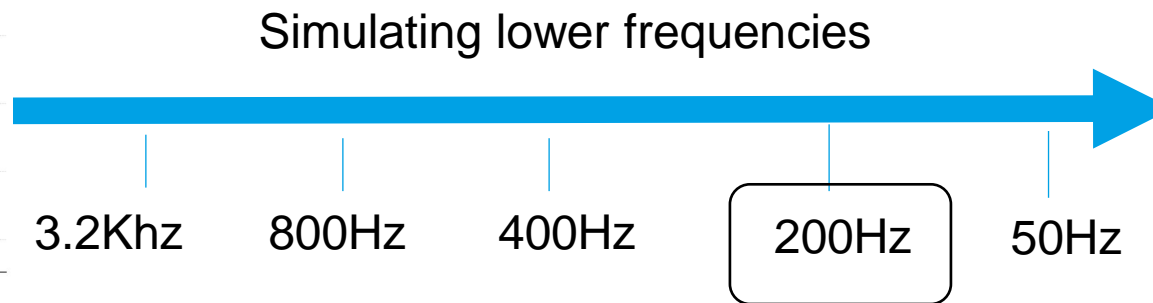
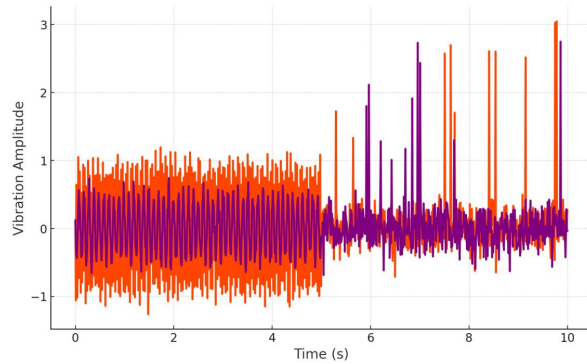


VALIDATION

F1 Score	Precision	Recall
0.994	0.995	0.994



F1 Score	Precision	Recall
0.980	0.966	0.996



PORTING THE ALGORITHM TO THE EMBEDDED DEVICE

